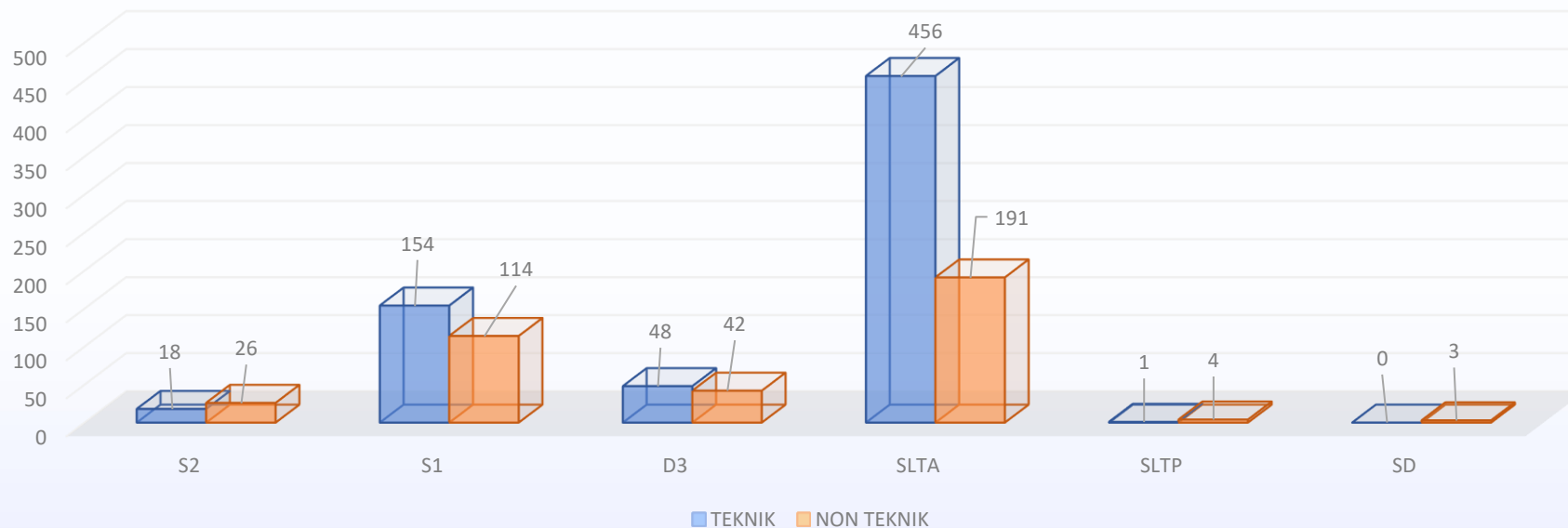
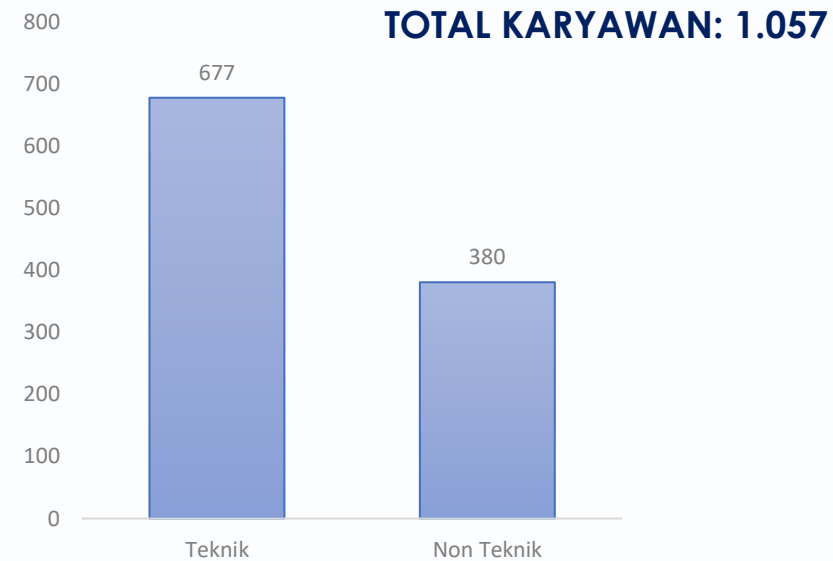
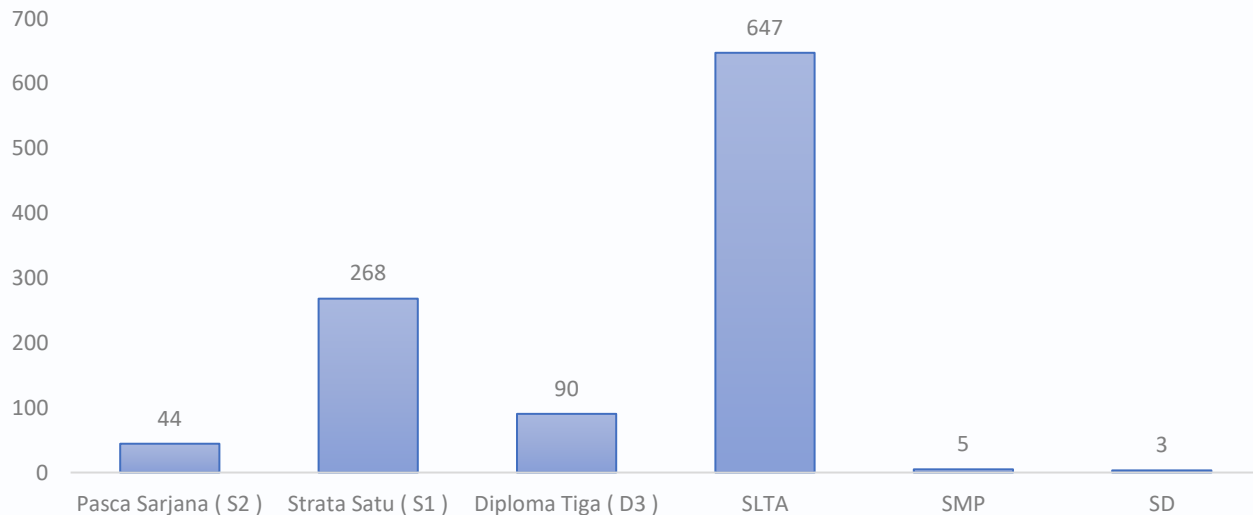
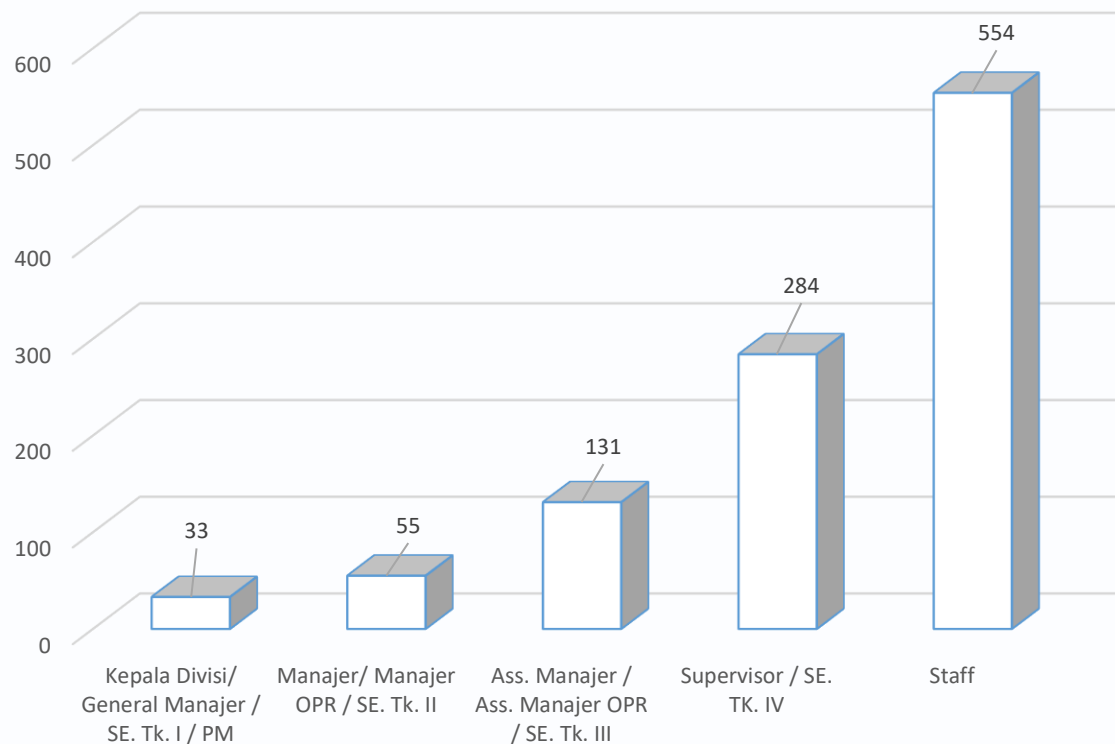


## KEADAAAN KARYAWAN BERDASARKAN PENDIDIKAN PER 31 AGUSTUS 2022

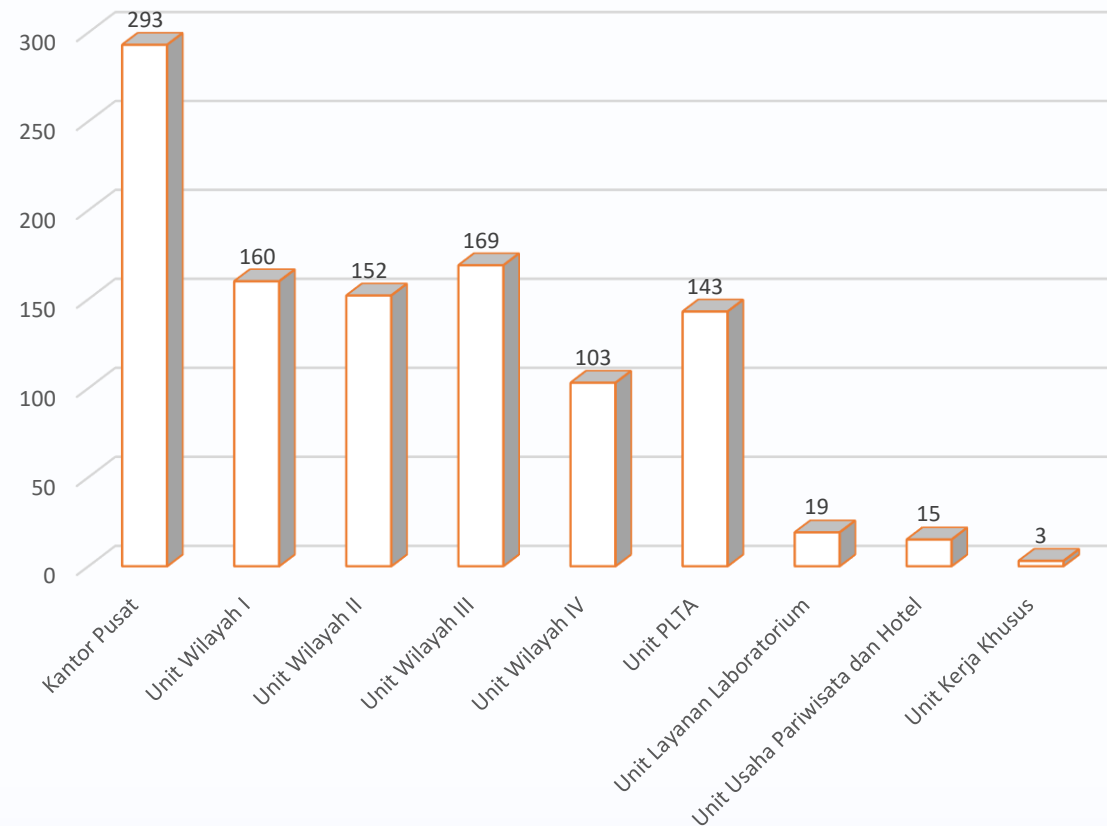


## KEADAAAN KARYAWAN BERDASARKAN JABATAN DAN PENEMPATAN PER 31 AGUSTUS 2022

**GRAFIK JABATAN**



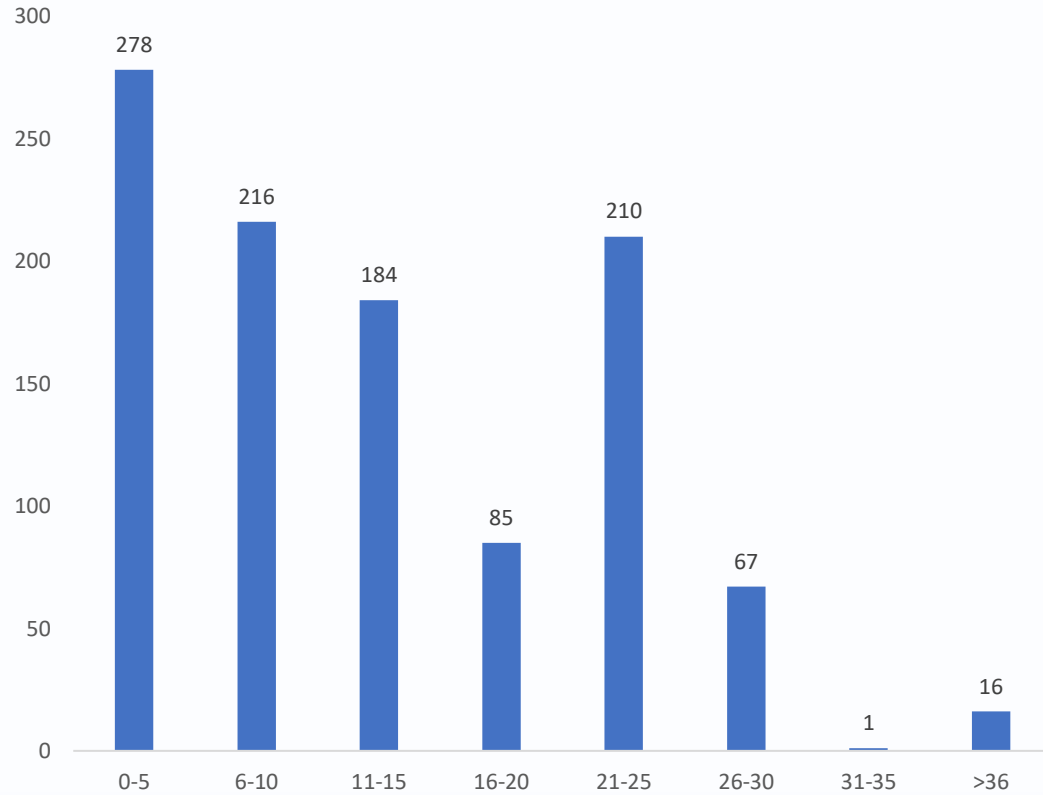
**GRAFIK PENEMPATAN**



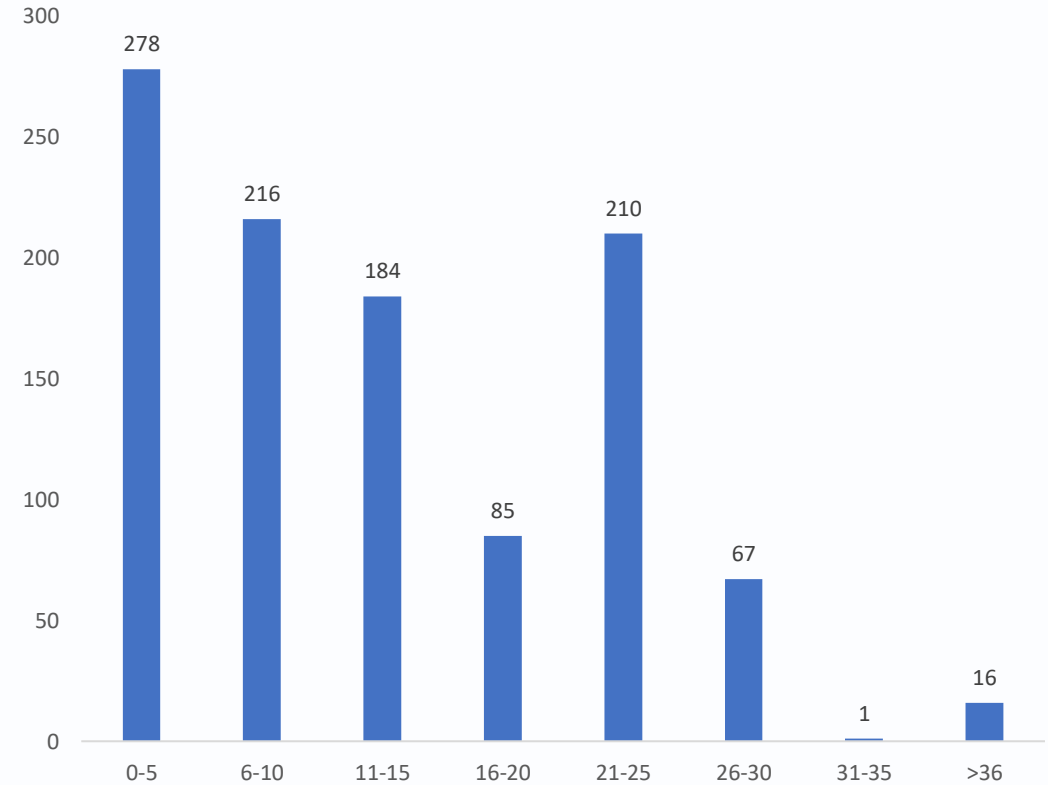
**TOTAL KARYAWAN: 1.057**

## KEADAAAN KARYAWAN BERDASARKAN USIA DAN MASA KERJA PER 31 AGUSTUS 2022

**BERDASARKAN USIA**

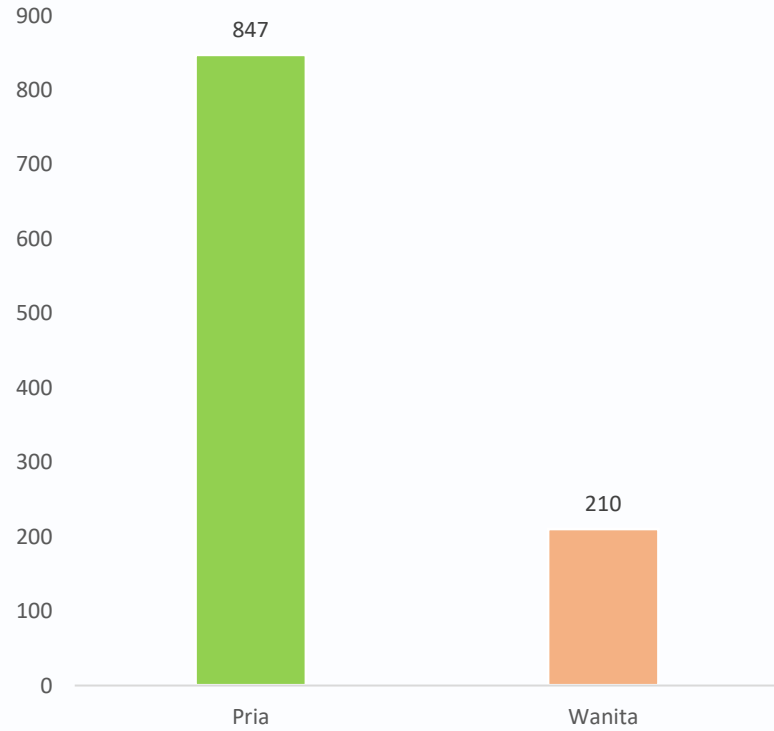


**BERDASARKAN MASA KERJA**



**TOTAL KARYAWAN: 1.057**

## KEADAAAN KARYAWAN BERDASARKAN GENDER PER 31 AGUSTUS 2022



**TOTAL KARYAWAN: 1.057**

